

Aplus USB Keylock Installation Guide

There are 3 type of Aplus Keylock:



Rockey2



Rockey4 Standalone



Rockey4 Network

Keylock Installation

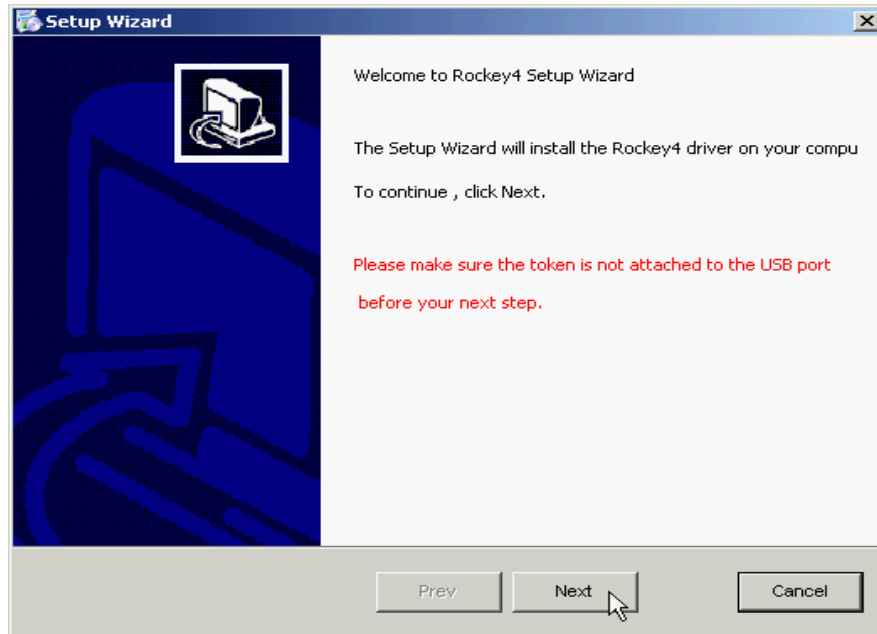
Rockey2 = No driver require. (Plug & Play)

Rockey4 Standalone = Rocky4 Driver require

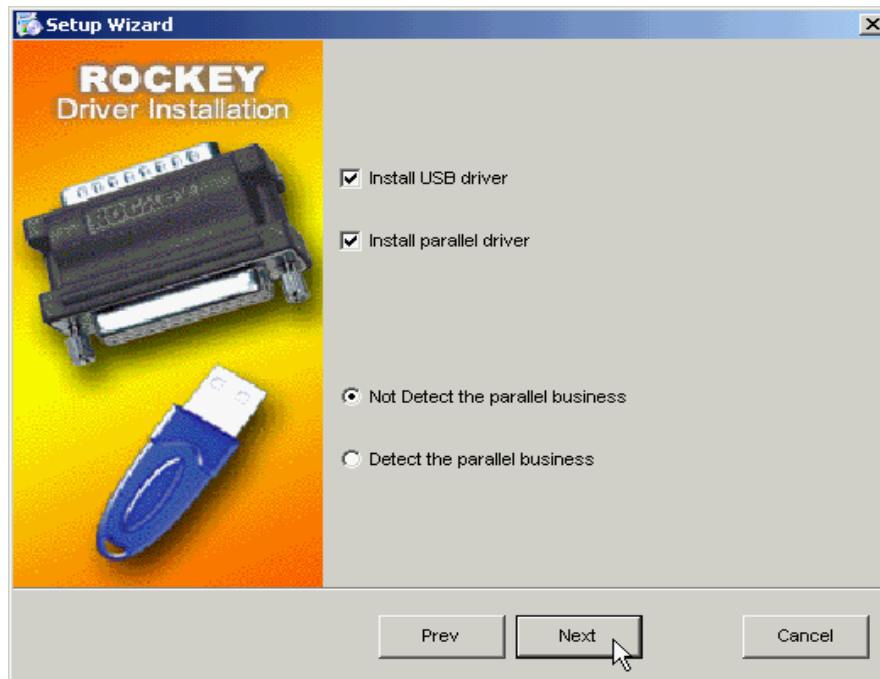
Rockey4 Network = Rocky4 Driver and Net services required.

Rockey4 Keylock Driver Installation

1. Run Rockey4 keylock driver Setup. Click Next button to continue.



2. Do Not change the default option during installation, just click next button to continue until installation complete.

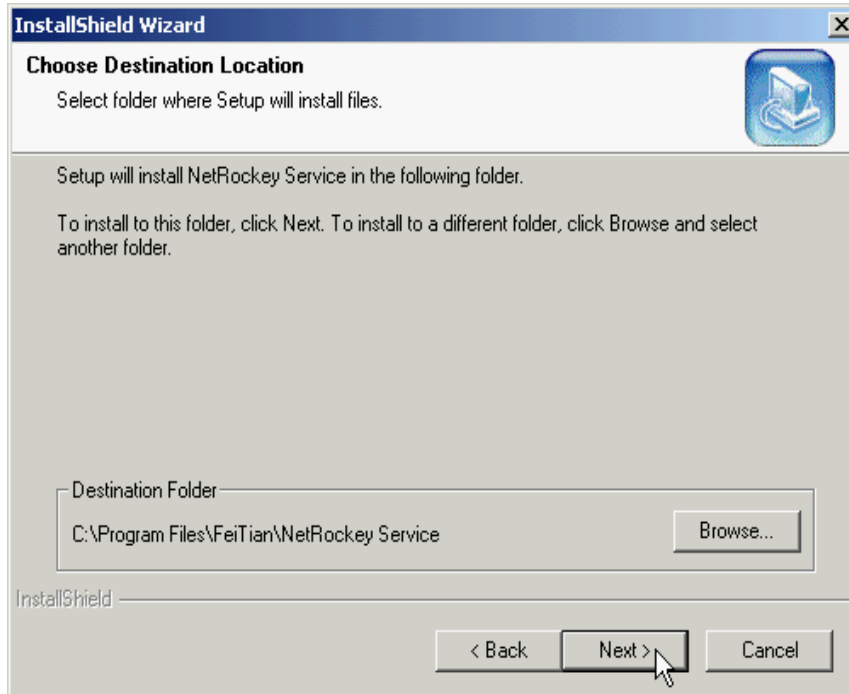


3. Setup completed, just click OK button to exit setup.
For standalone keylock (Blue colour keyock), please restart computer.
For Network version keylock (Red colour keylock), **Do Not** restart computer and please continue to install Net Services program.
4. Plug-in the Rockey4 keylock into computer USB port and waiting for windows complete the new hardware detection, then restart computer again. After restart, installation complete.

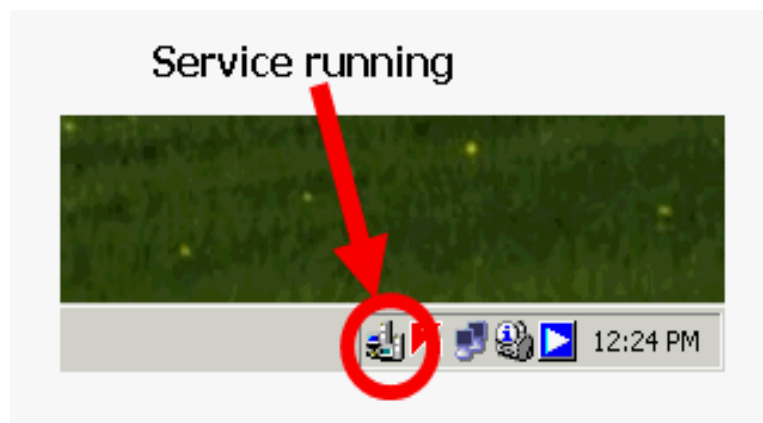
Install Rockey4 Net Services program.

Please make sure the USB Rockey4 keylock is not connected to your computer USB port before start Net Services installation.

1. Run Rockey4 Net Services program Setup. Click Next button to continue.



2. After installation complete, the service program will auto running in system tray.

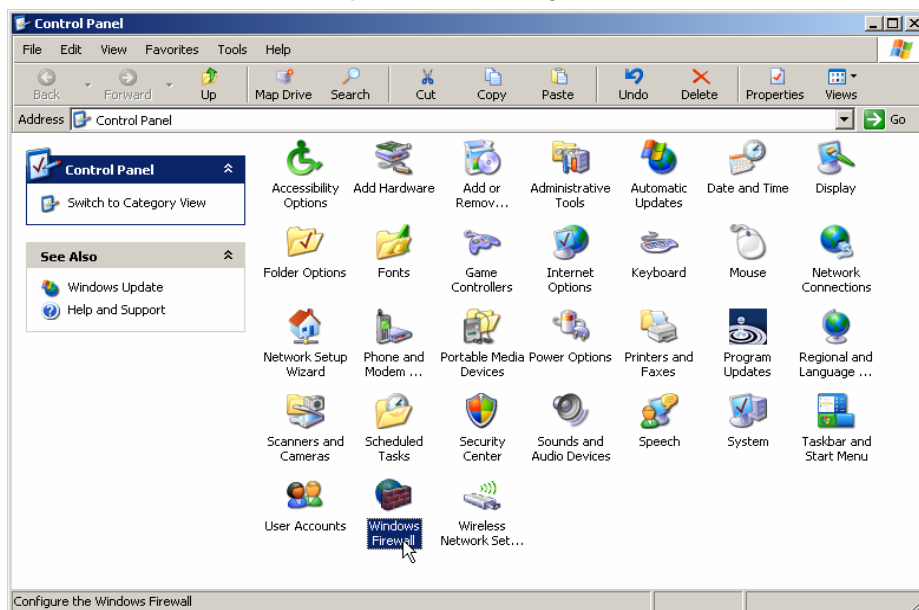


3. Restart computer.
4. Plug-in the Aplus USB Rockey4 keylock to computer USB port.
5. After the USB Rockey4 keylock is detected and ready to use, restart computer again.
6. Finish. You may run the Aplus software program at your main computer and client computer now.

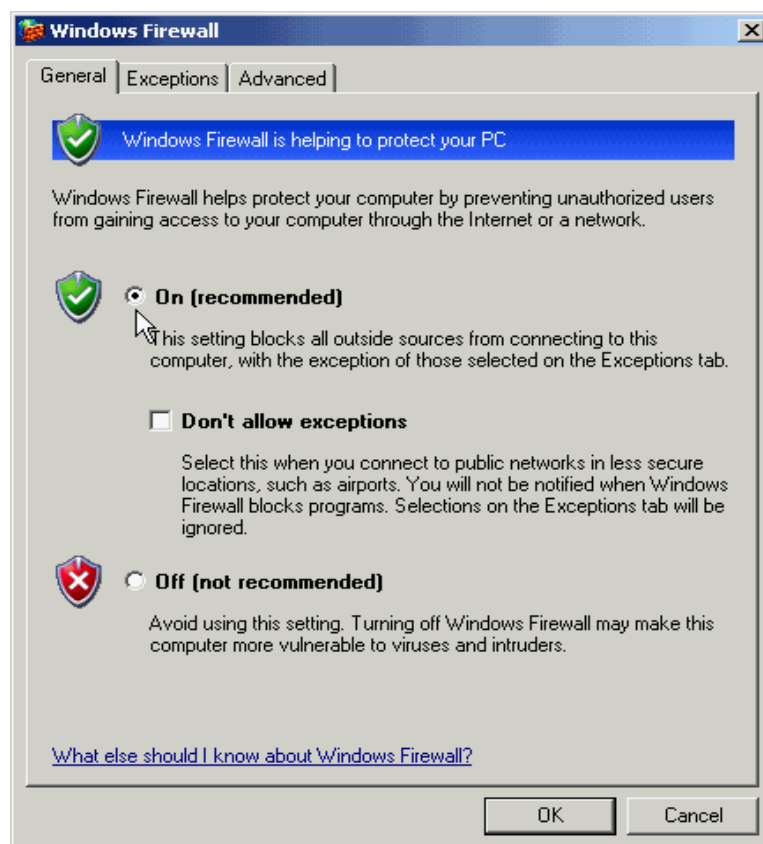
If program still reported for no authorization at client/workstation computer again, please check for windows Firewall setting, and Clicfg.ini file setting.

Windows XP Firewall Setting.

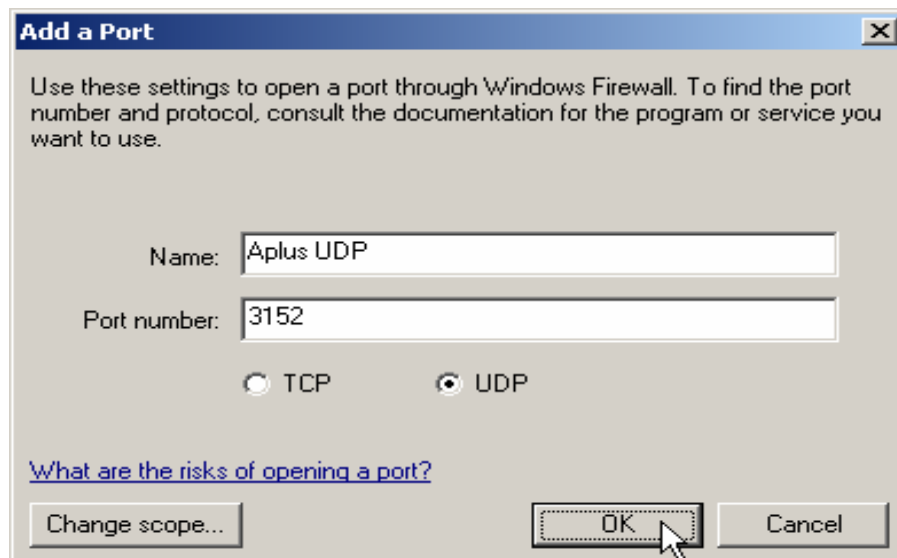
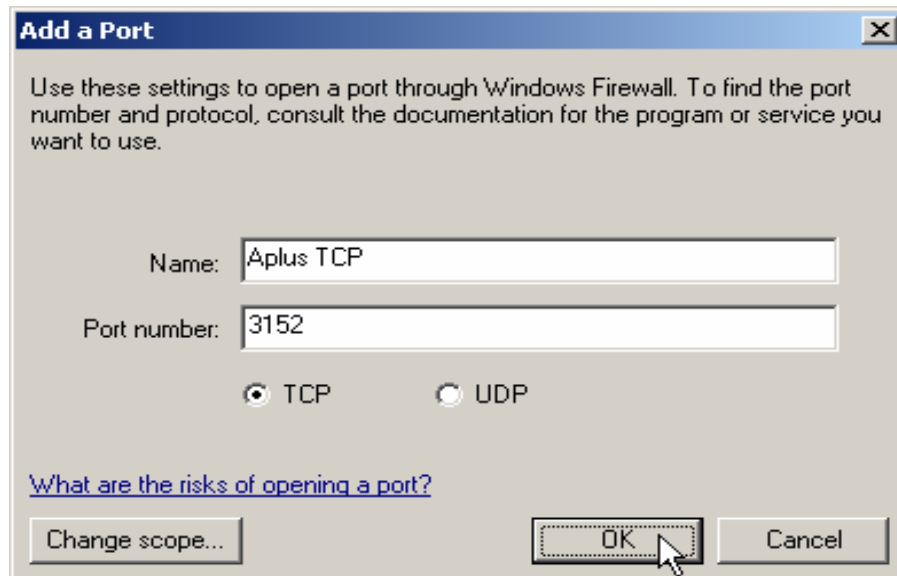
1. Go to Control panel on the Main Computer (Computer attached Aplus Rockey4 Keylock)
2. Double click on Windows Firewall option. (Security Centre)



3. Skip and exit this step if Windows Firewall is Off.
If Windows Firewall status is ON, then go to the Exceptions page.



4. Click Add port button to open the TCP and UDP Port 3152 for Aplus Rockey4 keylock.



5. Finish.

If have third party Antivirus or Firewall program installed, please open the 3152 TCP and UDP port for Rockey4 Net Services program.

Clicfg.ini File Setting

Clicfg.ini is a configuration file for the Rockey4 keylock. (Not effect to the rokey2 keylock.)

1. Enable
This option must set equal to Y.
2. Time Out
Time duration setting to seek Rockey4 key. For slow computer, recommended set to 5.
3. SearchFlag
Setting to set searching mode. Default is 0. Set to 1 for custom mode, user must define the IP address at the search list.
4. SearchList
Set the Main computer IP here for custom SearchFlag mode.

```
Clicfg.ini - Notepad
File Edit Format View Help

[Header]
Sign = RockeyClientHeader
      ; Client configuration file.

[Common]
Enable=Y
Timeout =2
SearchFlag =0

[TCPUDP]
bUseTCP =1
bUseUDP =1
TCPPort =3152
UDPPort =3152
SearchList =192.168.0.16, 192.168.0.1, swordhui

[IPX]
bUsed =0
IPXPort =3152
SearchList =00-A0-0C-13-0E-D2, 00-00-B4-B2-ED-7B

[NetBios]
bUsed =0
RegGrpName =FtNetServer
SearchList=Server, swordhui
```