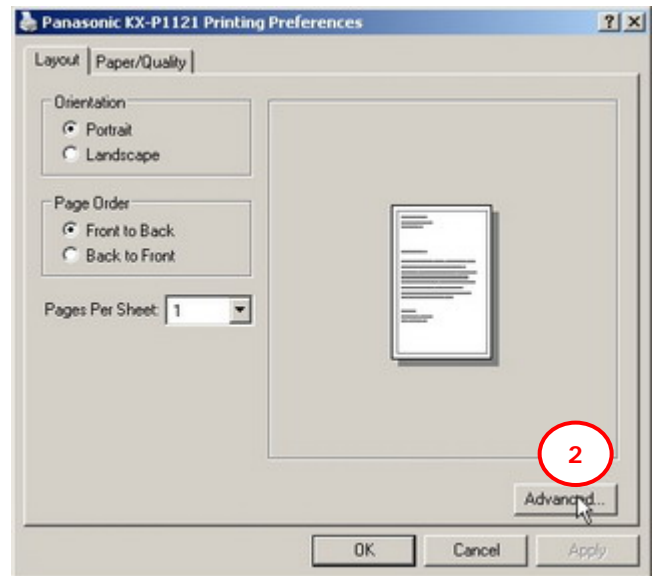
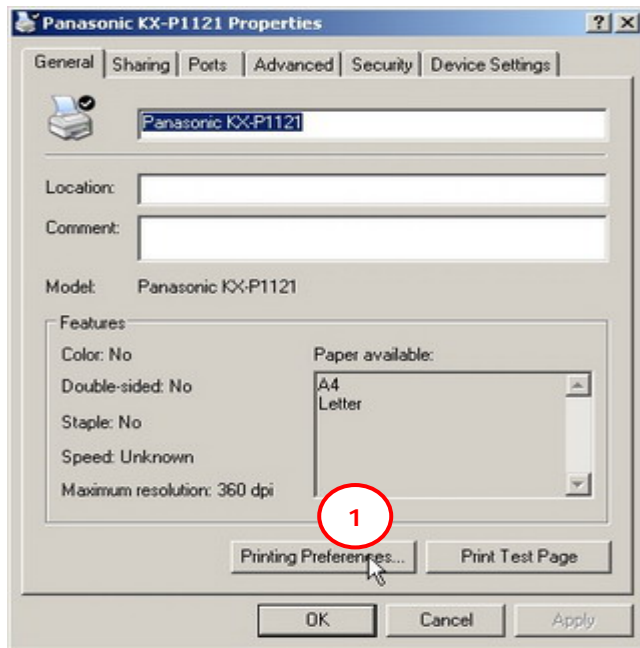


Paper setup for dot-matrix printer

(Fix data missing printing on last few lines at bottom of every page)

Go to Control Panel > Printers and Faxes. Right click on the printer drivers icons and select Properties.



1. On the General page, click Printing Preferences button.
2. Click Advanced button and set the Paper Size to Letter then click OK button to back to main page.
3. Click Advanced button on the top of page.
4. Click Printing Defaults button and repeat action 2a and 2b.
5. Click Device Settings on the top of page and setting :
Auto : A4
Tractor Feed : Letter
Manual Paper Feed : A4

